

Press release from *Save Gillies Hill*

12 March 2009



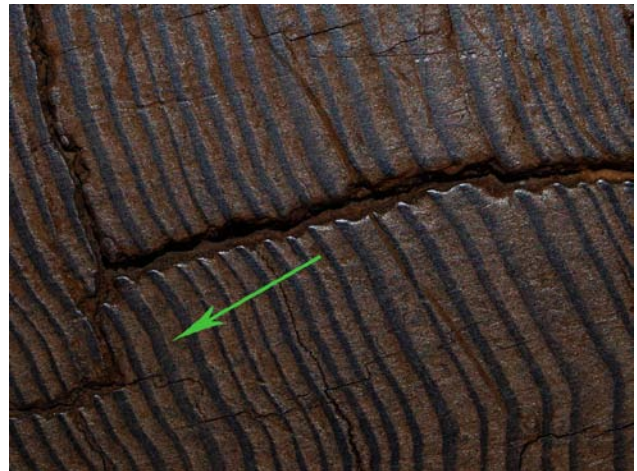
These two photographs, taken in California's State Park, throw a thoughtful light on the possible fate of the Gillies Hill, still under threat of destruction from quarrying. They were taken by one of *SGH's* amazing American supporters, botanist Peggy Edwards. The first shows the seeds of a Giant Redwood.

"How" asks Peggy rhetorically "Can these possibly grow into the tallest living things on the planet?"

The second shows the ring for the year 1314 of a mature tree.

"Poignant to think", writes Peggy, "That while the Battle of Bannockburn was raging, this redwood was quietly growing 6,000 miles away in the deep, dark, temperate rain-forest".

And more poignant to think that the giant *Wellingtonia* on the Gillies Hill, cousins of that Californian Redwood, visible from miles away, and still stretching towards their prime, will be brought down if quarry operations restart – on the historic hill from which the gillies, or camp-followers of Bruce's army descended in that same year of 1314.



But another battle, the modern one to save Gillies Hill, continues; details of this year's events will appear in a newsletter shortly